



**Rashtrasant Janardhan Swami Ayurved Medical College & Research Center  
Shri Janardhan Swami Ayurved Hospital & Research Center**

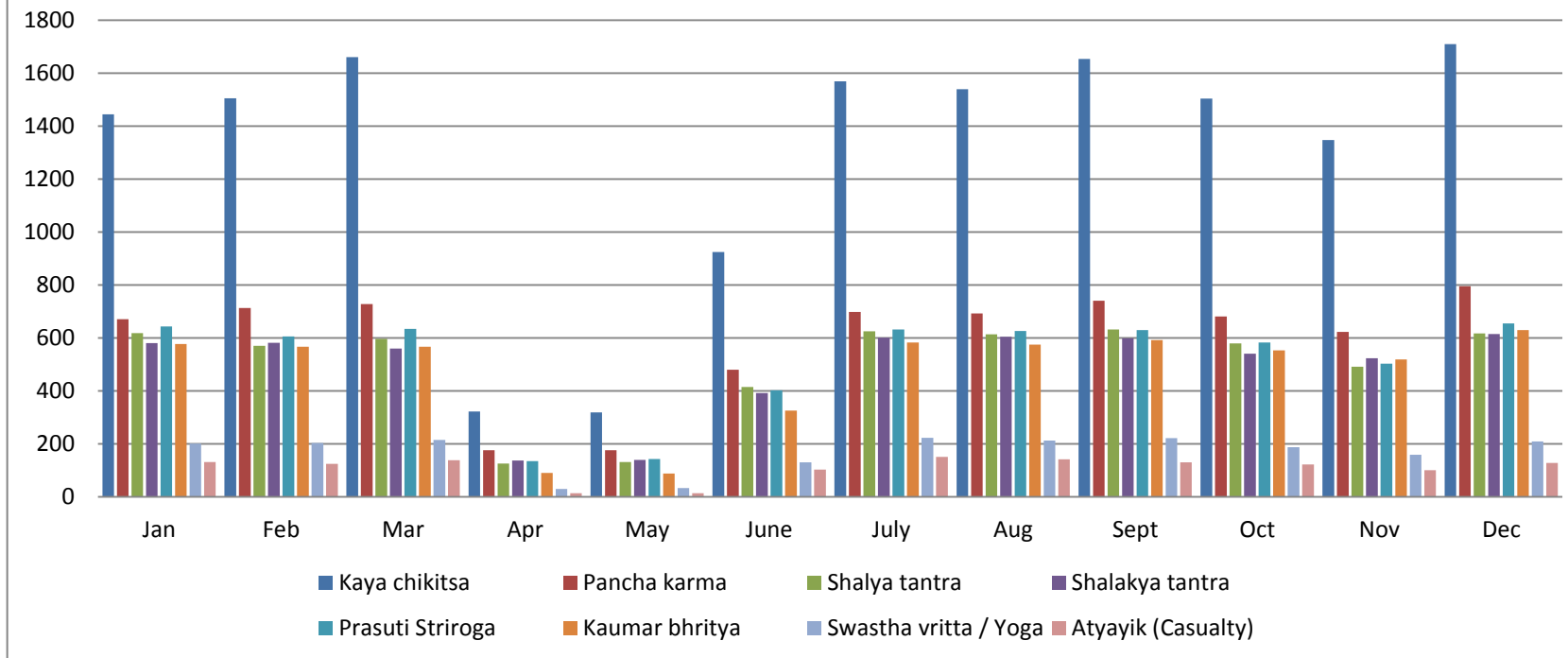
**OPD Data (NUMBER OF PATIENTS ATTENDED OPD (Jan to Dec 2021))**

<b>Sr. No.</b>	<b>Month</b>	<b>Kaya chikitsa</b>	<b>Pancha karma</b>	<b>Shalya tantra</b>	<b>Shalakyata tantra</b>	<b>Prasuti Striroga</b>	<b>Kaumar bhritya</b>	<b>Swastha vritta / Yoga</b>	<b>Atyayik (Casualty)</b>	<b>Total</b>
<b>1</b>	<b>January</b>	1444	670	618	580	643	577	201	131	<b>4864</b>
<b>2</b>	<b>February</b>	1505	713	570	581	605	566	203	124	<b>4867</b>
<b>3</b>	<b>March</b>	1660	728	596	560	634	566	214	138	<b>5096</b>
<b>4</b>	<b>April</b>	322	176	125	137	134	90	29	13	<b>1026</b>
<b>5</b>	<b>May</b>	319	176	131	139	142	87	33	13	<b>1040</b>
<b>6</b>	<b>June</b>	924	480	414	392	402	325	130	102	<b>3169</b>
<b>7</b>	<b>July</b>	1569	698	625	601	632	582	223	150	<b>5080</b>
<b>8</b>	<b>August</b>	1539	692	613	604	626	574	212	141	<b>5001</b>
<b>9</b>	<b>September</b>	1653	740	632	599	629	592	221	130	<b>5196</b>
<b>10</b>	<b>October</b>	1504	681	579	540	583	553	187	122	<b>4749</b>
<b>11</b>	<b>November</b>	1347	622	491	523	502	519	158	100	<b>4262</b>
<b>12</b>	<b>December</b>	1709	795	617	615	654	629	209	128	<b>5356</b>
<b>13</b>	<b>Total</b>	<b>15495</b>	<b>7171</b>	<b>6011</b>	<b>5871</b>	<b>6186</b>	<b>5660</b>	<b>2020</b>	<b>1292</b>	<b>49706</b>



## Rashtrasant Janardhan Swami Ayurved Medical College & Research Center Shri Janardhan Swami Ayurved Hospital & Research Center

OPD Data (NUMBER OF PATIENTS ATTENDED OPD (Jan to Dec 2021))





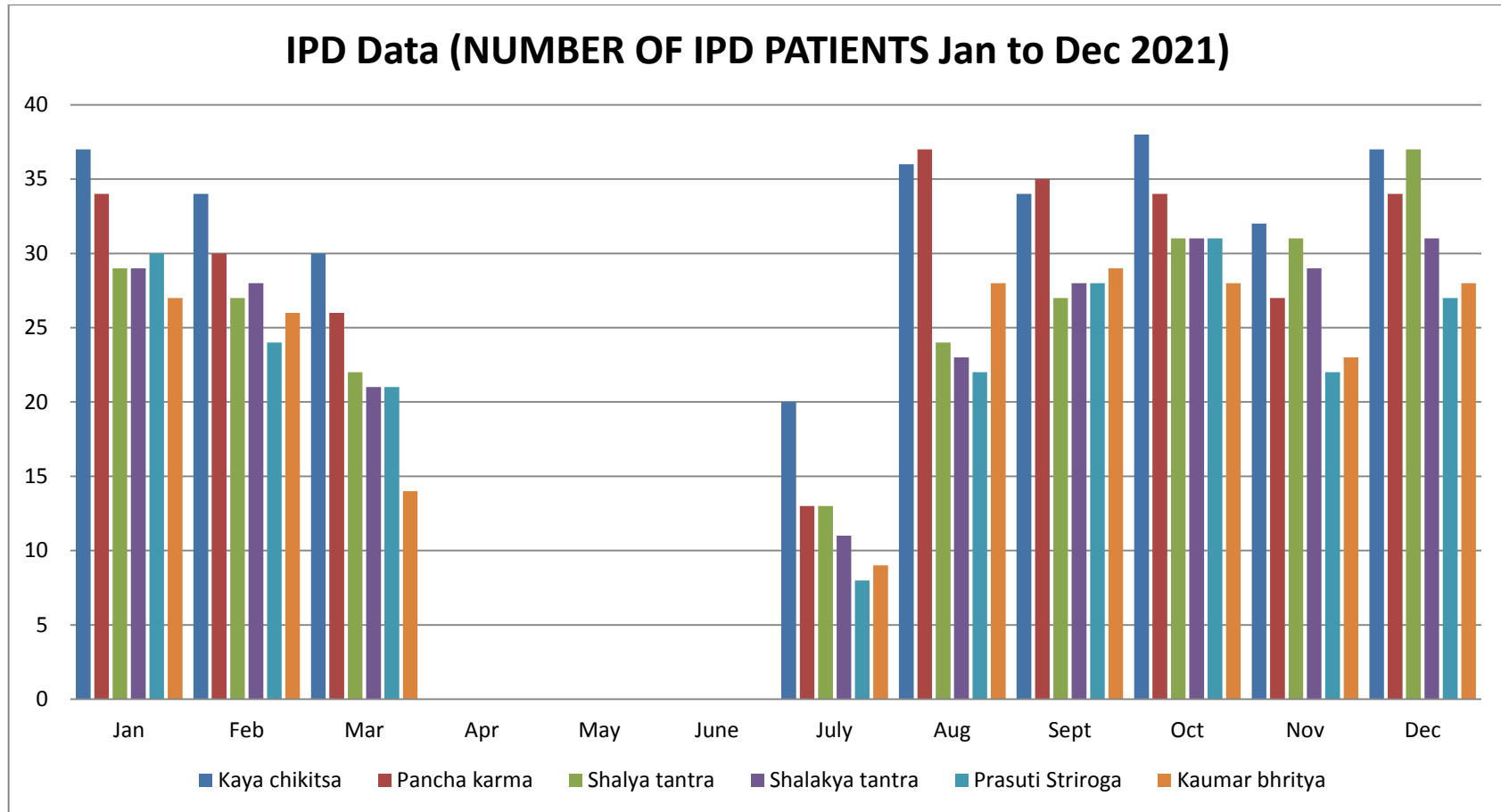
**Rashtrasant Janardhan Swami Ayurved Medical College & Research Center  
Shri Janardhan Swami Ayurved Hospital & Research Center**

**IPD Data (NUMBER OF IPD PATIENTS Jan to Dec 2021)**

<b>Sr. No.</b>	<b>Month</b>	<b>Kaya chikitsa</b>	<b>Pancha karma</b>	<b>Shalya tantra</b>	<b>Shalakya tantra</b>	<b>Prasuti Striroga</b>	<b>Kaumar bhritya</b>	<b>Total</b>
<b>1</b>	<b>January</b>	37	34	29	29	30	27	<b>186</b>
<b>2</b>	<b>February</b>	34	30	27	28	24	26	<b>169</b>
<b>3</b>	<b>March</b>	30	26	22	21	21	14	<b>134</b>
<b>4</b>	<b>April</b>	0	0	0	0	0	0	<b>0</b>
<b>5</b>	<b>May</b>	0	0	0	0	0	0	<b>0</b>
<b>6</b>	<b>June</b>	0	0	0	0	0	0	<b>0</b>
<b>7</b>	<b>July</b>	20	13	13	11	8	9	<b>74</b>
<b>8</b>	<b>August</b>	36	37	24	23	22	28	<b>170</b>
<b>9</b>	<b>September</b>	34	35	27	28	28	29	<b>181</b>
<b>10</b>	<b>October</b>	38	34	31	31	31	28	<b>193</b>
<b>11</b>	<b>November</b>	32	27	31	29	22	23	<b>164</b>
<b>12</b>	<b>December</b>	37	34	37	31	27	28	<b>194</b>
<b>13</b>	<b>Total</b>	<b>298</b>	<b>270</b>	<b>241</b>	<b>231</b>	<b>213</b>	<b>212</b>	<b>1465</b>



## Rashtrasant Janardhan Swami Ayurved Medical College & Research Center Shri Janardhan Swami Ayurved Hospital & Research Center





**Rashtrasant Janardhan Swami Ayurved Medical College & Research Center  
Shri Janardhan Swami Ayurved Hospital & Research Center**

**IPD Data (Total Bed days Occupied Jan to Dec 2021)**

<b>Sr. No.</b>	<b>Month</b>	<b>Kaya chikitsa</b>	<b>Pancha karma</b>	<b>Shalya tantra</b>	<b>Shalakyta tantra</b>	<b>Prasuti Striroga</b>	<b>Kaumar bhritya</b>	<b>Total</b>
<b>1</b>	<b>January</b>	381	356	191	141	196	149	<b>1414</b>
<b>2</b>	<b>February</b>	324	258	159	123	154	138	<b>1156</b>
<b>3</b>	<b>March</b>	328	250	148	94	134	88	<b>1042</b>
<b>4</b>	<b>April</b>	0	0	0	0	0	0	<b>0</b>
<b>5</b>	<b>May</b>	0	0	0	0	0	0	<b>0</b>
<b>6</b>	<b>June</b>	0	0	0	0	0	0	<b>0</b>
<b>7</b>	<b>July</b>	133	93	58	51	36	39	<b>410</b>
<b>8</b>	<b>August</b>	334	282	161	113	145	151	<b>1186</b>
<b>9</b>	<b>September</b>	344	310	174	129	175	156	<b>1288</b>
<b>10</b>	<b>October</b>	338	307	185	146	198	151	<b>1325</b>
<b>11</b>	<b>November</b>	290	265	213	150	150	135	<b>1203</b>
<b>12</b>	<b>December</b>	354	313	245	139	164	151	<b>1366</b>
<b>13</b>	<b>Total</b>	<b>2826</b>	<b>2434</b>	<b>1534</b>	<b>1086</b>	<b>1352</b>	<b>1158</b>	<b>10390</b>

**(Bed occupancy: 28.00%)**



## Rashtrasant Janardhan Swami Ayurved Medical College & Research Center Shri Janardhan Swami Ayurved Hospital & Research Center

### IPD Data (Total Bed days Occupied Jan to Dec 2021)

